



DATA
OUTPUT

ULTRASONIC HARDNESS TESTER CODE ISHU-460

Application:

1. For steel, non-ferrous metal and alloy
2. Test surface hardening layers (carburized, nitriding, high frequency hardened, etc.) and plating (like chrome plating)
3. Suitable for thin wall or edge of workpieces
4. Suitable for small areas like arc, conical surface and other complex shapes
5. Suitable for small or light workpieces
6. Suitable for narrow spaces, like grooves and blind holes
7. Test large workpieces at any direction
8. Suitable for rough surfaces

SPECIFICATION OF MAIN UNIT

Hardness scale	HV, HB, HRB, HRC, HS, Mpa
Resolution	1HV, 1HB, 1HRB, 0.1HRC, 1HS
Accuracy	HB ±10HB
	HV ±15HV
	HRC ±2HRC
Data output	USB
Operating temperature	-20°C ~ +40°C
Power supply	built-in rechargeable battery
Dimension and weight of main unit	160×80×40mm, 315g



cover

- Small test indentation
- Test force and time are not affected by the operator
- Quick test, only 2 seconds
- Memory of 1000 test results
- Automatic power off
- Anti-dust and waterproof



test flat surfaces
(with the cover)



test cylinder surfaces
(use V-groove
on the cover)



test narrow areas
(remove the cover)

SPECIFICATION OF PROBE

Type	A (standard)	B (optional)
Measuring force	50N	10N (small force)
Application	general use	plating
Maximum roughness of workpiece (Ra)	2.5µm	1.5µm
Minimum weight of workpiece (direct measurement)	0.1kg *	0.1kg *
Minimum thickness of workpiece (direct measurement)	1mm *	1mm *
Minimum radius of workpiece (direct measurement)	5mm	5mm
Minimum thickness of surface hardening layer or plating	0.1mm	0.03mm
Minimum measuring area	Ø1mm	Ø1mm
Dimension and weight of probe	140×Ø37mm, 271g	145×Ø37mm, 271g

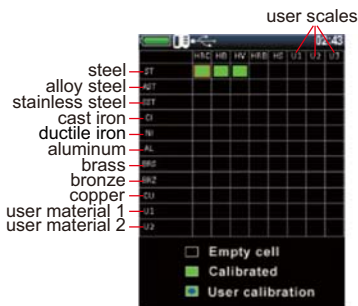
STANDARD DELIVERY

Main unit	1pc
Probe A	1pc
AC/DC adapter	1pc
USB cable and software	1pc

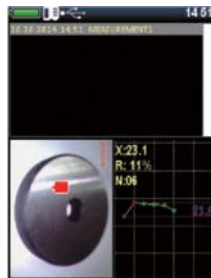
OPTIONAL ACCESSORY

Probe B	ISHU-460-B
Couplant	ISH-COULPLANT

* If the weight or thickness of workpiece is less than required, the workpiece should be fixed or coupled on solid support.



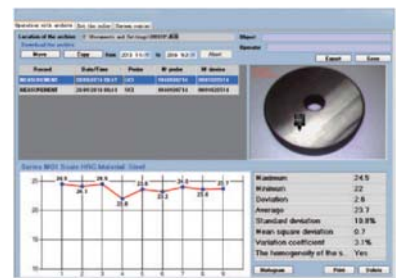
select the material and scale, use the corresponding standard hardness blocks or workpieces for calibration (calibration of HRC, HB and HV for steel are already made, calibration is needed before use other materials and scales)



can take a picture on the workpiece and get a report with testing result and picture, the report can be sent to computer



back



software (included), output data, make and print reports, screen capture, set screen colors of hardness tester



Graph display mode, show average value, relative range and test times



Histogram display mode, show average value, relative range and relative standard deviation



Statistics display mode, show maximum, minimum, deviation, average, relative range and test times



Smart display mode, can set tolerance, automatically reject the result when out of tolerance