

PRECISION DIAL INDICATOR

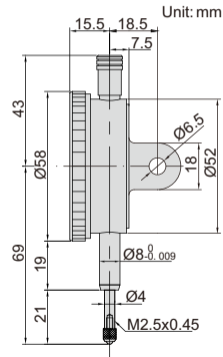
JEWELLED
BEARING

SHOCK
PROOF

- Shockproof
- Jeweled bearing
- With limit pointers
- Optional accessory: backs (page 101), contact points (page 98~100)



2830-1



Code	Range	Graduation	Accuracy	Hysteresis	Range/rev	Dial reading	Remark
2830-1 *	1mm	0.001mm	4 μ m	2 μ m	0.2mm	0-100-0	lug back
2830-1F *	1mm	0.001mm	4 μ m	2 μ m	0.2mm	0-100-0	flat back

* Supplied with manufacturer inspection certificate traceable to NIST USA