

PRECISION DIAL INDICATOR



2313-1A

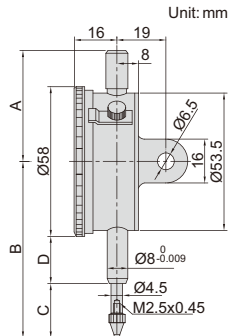
- Graduation: 0.001mm
- Jeweled bearing
- Supplied with limit pointers and bezel clamp
- Optional accessory: backs (page 101), contact points (page 98~100)

JEWELLED BEARING



Code	Range	Accuracy	Hysteresis	Range/rev	Dial reading	Remark	A	B	C	D
2313-1FA*	1mm	5 μ m	2 μ m	0.2mm	0-100-0	flat back	45	62.5	19.5	15
2313-2FA*	2mm	8 μ m	2.5 μ m	0.2mm	0-100-0	flat back	45	62.5	19.5	15
2313-1A*	1mm	5 μ m	2 μ m	0.2mm	0-100-0	lug back	45	62.5	19.5	15
2313-2A*	2mm	8 μ m	2.5 μ m	0.2mm	0-100-0	lug back	45	62.5	19.5	15

(mm)



* Supplied with manufacturer inspection certificate traceable to NIST USA