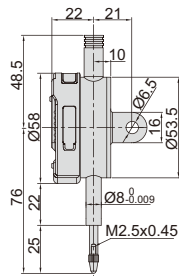


METRIC DIGITAL INDICATOR



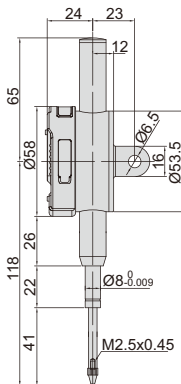
DATA
OUTPUT



2116-10
2116-101



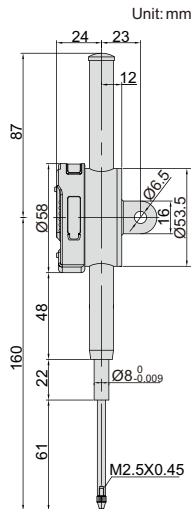
2116-10



2116-25
2116-251



2116-251



2116-50
2116-501



2116-501

- Button function: on/off, +/-, zero
- CR2032 battery, automatic power off
- Data output
- Optional accessory: data output cable (code **7306-40**, **7302-SPC3A**, **7305-SPC1A**), backs (page 101), contact points (page 98~100)

spindle lift knob is included



Resolution 0.001mm

Code	Range	Accuracy	Hysteresis	Remark
2116-101F*	12.7mm	5µm	2µm	flat back
2116-251F*	25.4mm	5µm	3µm	flat back
2116-501F*	50.8mm	6µm	3µm	flat back
2116-101*	12.7mm	5µm	2µm	lug back
2116-251*	25.4mm	5µm	3µm	lug back
2116-501*	50.8mm	6µm	3µm	lug back

Resolution 0.01mm

Code	Range	Accuracy	Hysteresis	Remark
2116-10F*	12.7mm	20µm	10µm	flat back
2116-25F*	25.4mm	20µm	10µm	flat back
2116-50F*	50.8mm	30µm	10µm	flat back
2116-10*	12.7mm	20µm	10µm	lug back
2116-25*	25.4mm	20µm	10µm	lug back
2116-50*	50.8mm	30µm	10µm	lug back

* Supplied with manufacturer inspection certificate traceable to NIST USA