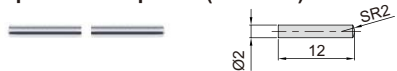


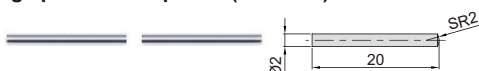
# DIGITAL CALIPER WITH INTERCHANGEABLE POINTS CODE 1124-300A

DATA  
OUTPUT

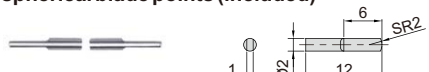
short spherical/flat points (included) Unit: mm



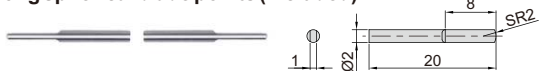
long spherical/flat points (included) Unit: mm



short spherical blade points (included) Unit: mm



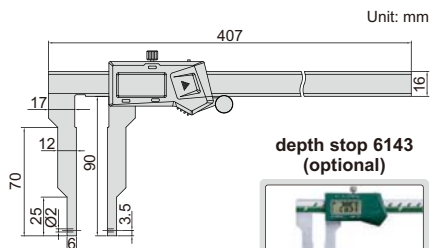
long spherical blade points (included) Unit: mm



- Supplied with 4 pairs of points and zero setting block for external measurement
- Resolution: 0.01mm/0.0005"
- Buttons: on/off, set, mm/inch, preset (+, -)
- Automatic power off, move the digital unit to turn on power
- Battery CR2032
- Data output
- Made of stainless steel
- Optional accessory: points (code 1526-T101, 7392, 7391, 7381, 7321), depth stop (code 6143), data output cable (code 7306-20, 7302-SPC5A/SPC5B, 7305-SPC2A)



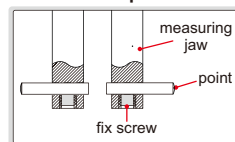
1124-300A



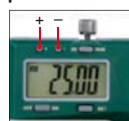
depth stop 6143  
(optional)



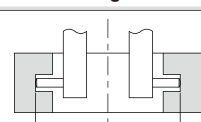
install points



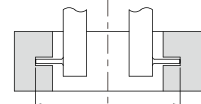
preset buttons



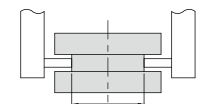
measure internal and external grooves



spherical points for groove (inside hole) measurement



spherical blade points for narrow groove (inside hole) measurement



flat points for external groove measurement

zero setting block for external measurement (included)



Point	Range	Accuracy	Application
short spherical/flat points	24-324mm/1-12.7"(internal) 0-288mm/0-11.3"(external)	±0.04mm	spherical points for grooves inside hole (small hole) flat points for external grooves
long spherical/flat points	40-340mm/1.5-13.3"(internal) 0-272mm/0-10.7"(external)	±0.04mm	spherical points for grooves inside hole (large hole) flat points for external grooves
short spherical blade points	24-324mm/1-12.7"(internal) 0-288mm/0-11.3"(external)	±0.04mm	for narrow grooves inside hole (small hole)
long spherical blade points	40-340mm/1.5-13.3"(internal) 0-272mm/0-10.7"(external)	±0.04mm	for narrow grooves inside hole (large hole)

Multifunctional points 7392 (optional, previous page)



Ball points 7391 (optional, previous page)



Screw thread points 7381, 7321 (optional, previous page)

