

RS232 DATA OUTPUT CABLE



7305-SPC1A



7305-SPC2A



USB power port

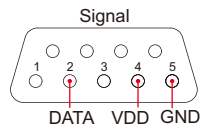
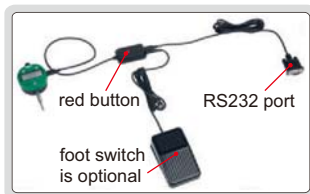
7305-SPC3



foot switch (optional)

7304-2

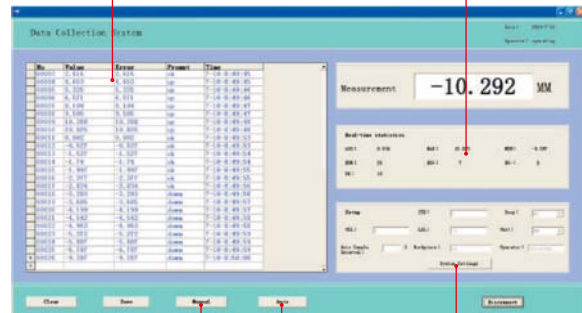
- Manual sampling and automatic sampling
- Press manual sampling button or red button on cable or foot switch once to collect the reading from measuring tool once
- Can be used in Windows Hyperterminal
- Supplied with software
- Voltage required: 5-10V
- Cable length 2.5m



automatic judgment by setting tolerance

test result display (maximum value, minimum value, total quantity of workpiece, quantity of Go and No-Go, quantity of exceed upper tolerance and exceed lower tolerance)

Code	Applicable products	
7305-SPC1A		digital indicators
7305-SPC2A		digital calipers and digital depth gages (not for 1103)
7305-SPC3		digital micrometers (not for 3631, 3632, 3108, 3109, 3635)
7304-2	foot switch with cable (length 1.5m), optional	



manual sampling

automatic sampling

set auto sampling interval and tolerance